

Aerial - Site View

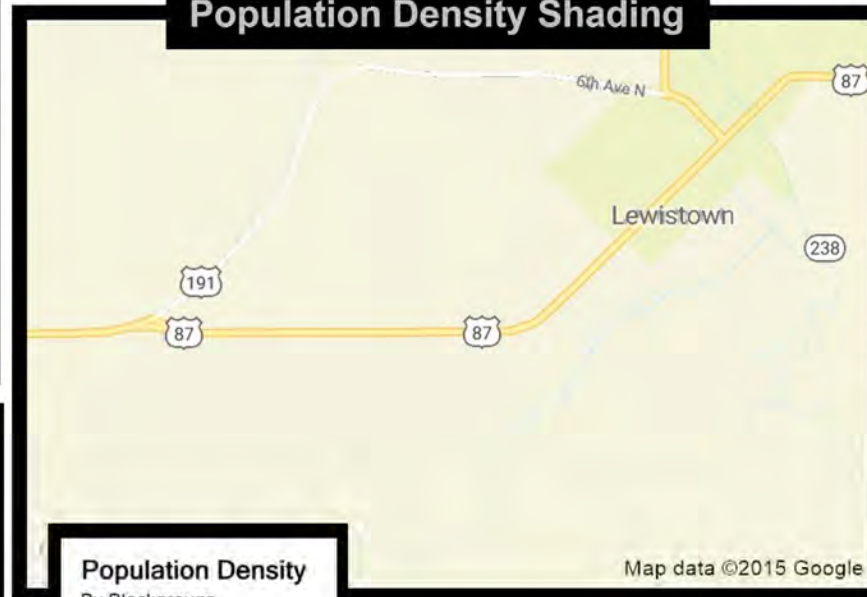


20 Acres available for development

Lots adjacent to Tractor Supply

Lewistown is the geographic center of Montana

Population Density Shading



Population Density

By Blockgroups

- 7,500 or more
- 5,000 to 7,500
- 2,500 to 5,000
- 1,000 to 2,500
- Less than 1,000

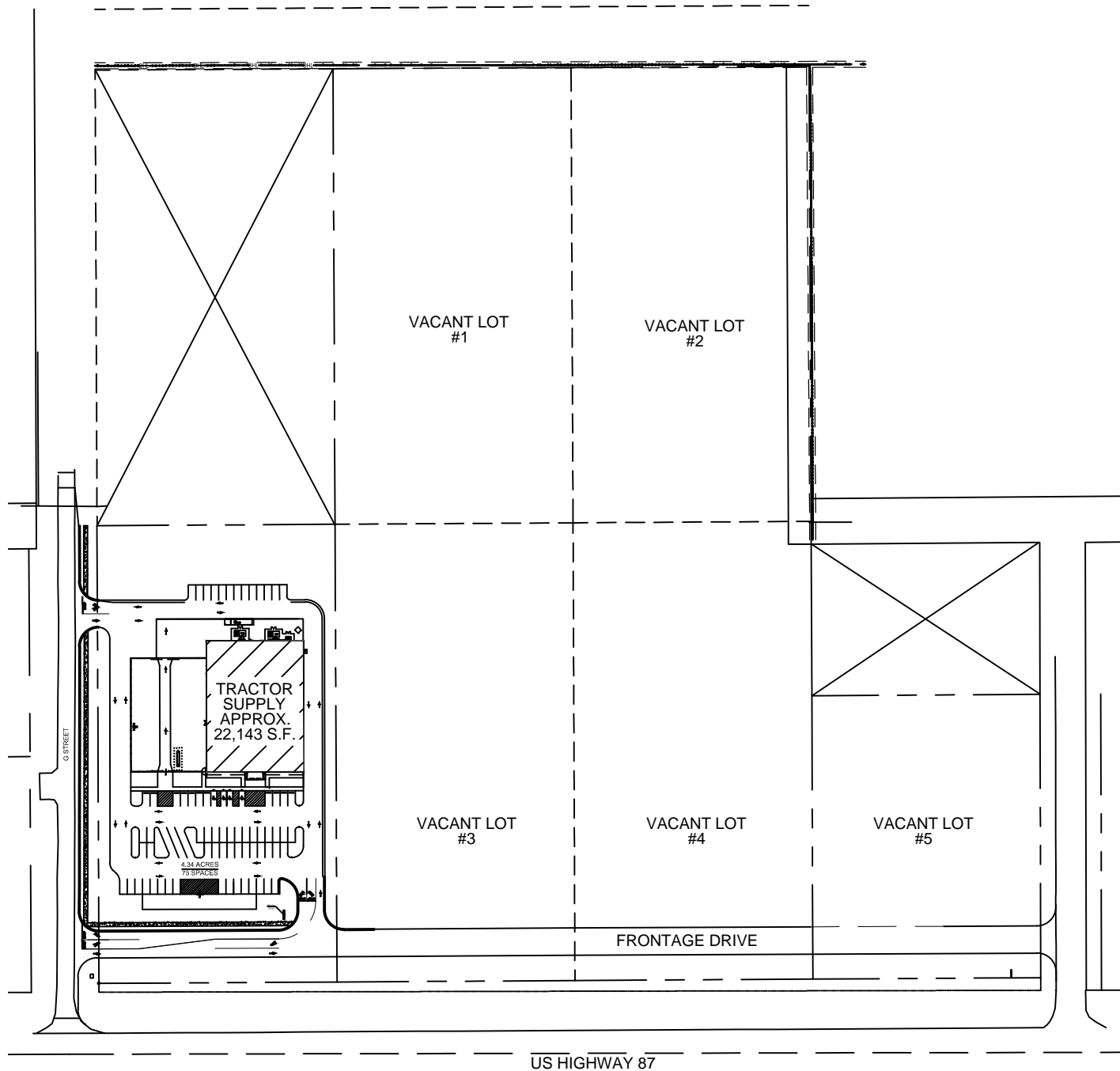
Demographic Data

	5 mi radius	10 mi radius	15 mi radius
Population (2019)	7,560	8,488	9,205
Households (2019)	3,531	3,914	4,211
Median household income (2019)	\$47,693	\$49,256	\$50,198
Total Employees	4,279	4,431	4,581
Total Establishments	578	603	626

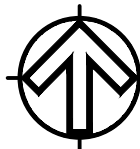
COCCA DEVELOPMENT, LTD

100 DEBARTOLO PLACE SUITE 400 BOARDMAN, OHIO 44512
(330) 729-1010

WWW.COCCADEVELOPMENT.COM



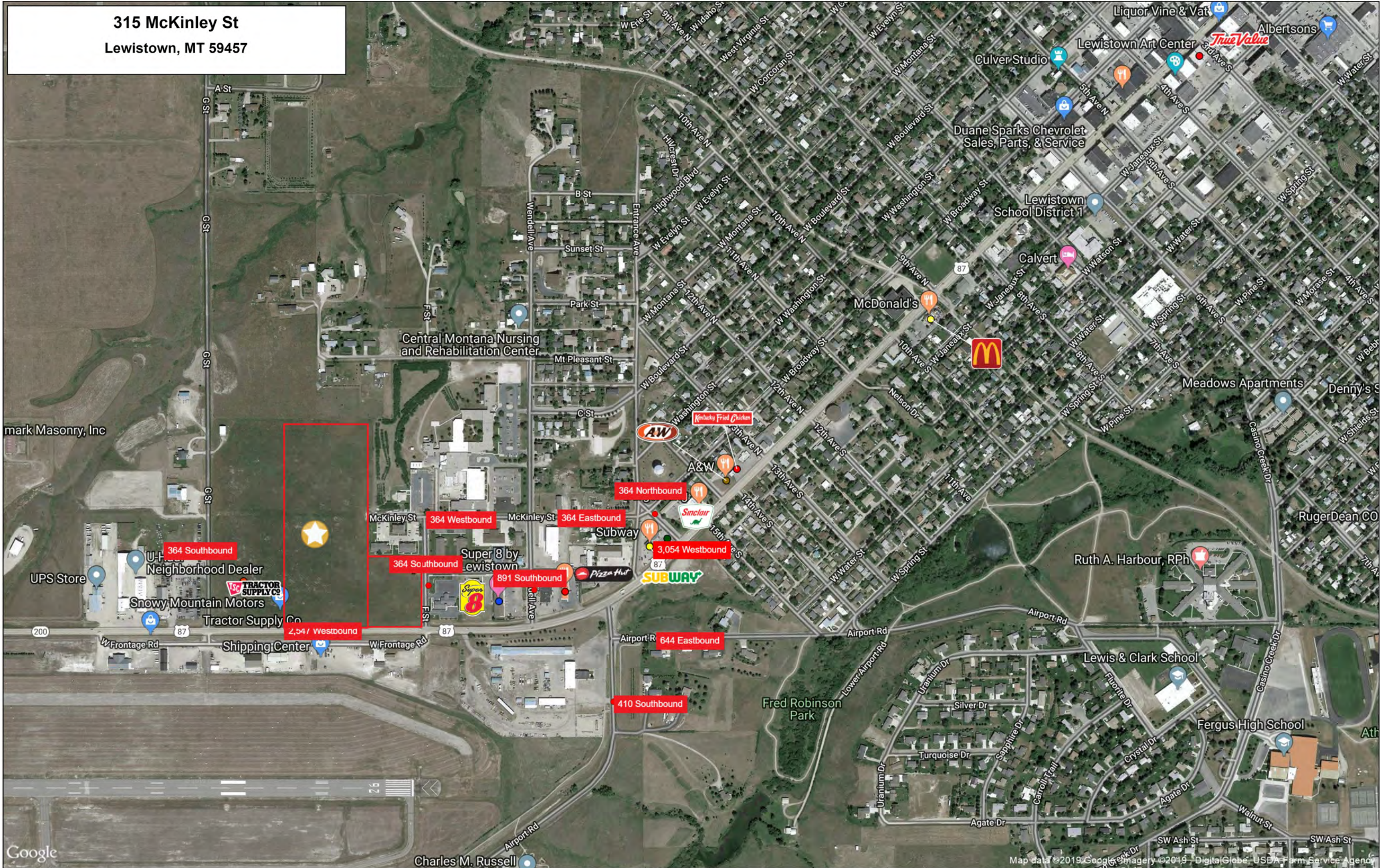
US HIGHWAY 87



MASTER SITE PLAN

SCALE: 1" = 200'-0"

315 McKinley St
Lewistown, MT 59457



Google

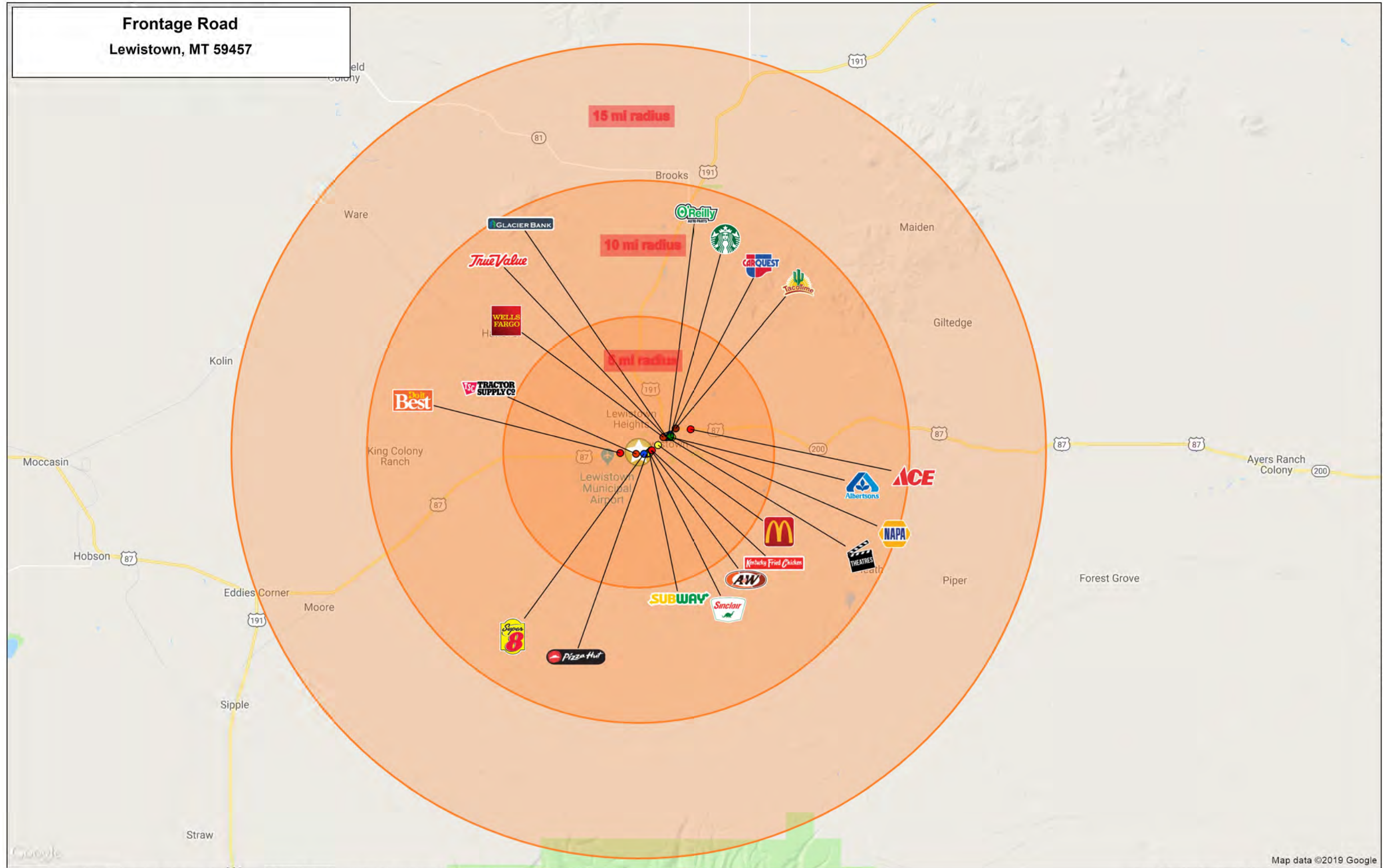
This map was produced using data from private and government sources deemed to be reliable. The information herein is provided without representation or warranty

Map data ©2019 Google Imagery ©2019 DigitalGlobe, USDA Farm Service Agency

©2019, SITES USA Inc., Chandler, AZ (480) 491-1112. All Rights Reserved.

Lat: 47.05886 Long: -109.43840 Zoom: 16
Logos are for identification purposes only and may be trademarks of their respective companies.

Frontage Road
Lewistown, MT 59457



Lat: 47.065988 Long: -109.40440 Zoom: 11

Logos are for identification purposes only and may be trademarks of their respective companies.

GRAPHIC PROFILE

2000-2010 Census, 2019 Estimates with 2024 Projections

Calculated using Weighted Block Centroid from Block Groups

Lat/Lon: 47.0572/-109.4475

RGRAP3

Frontage Road

Lewistown, MT 59457

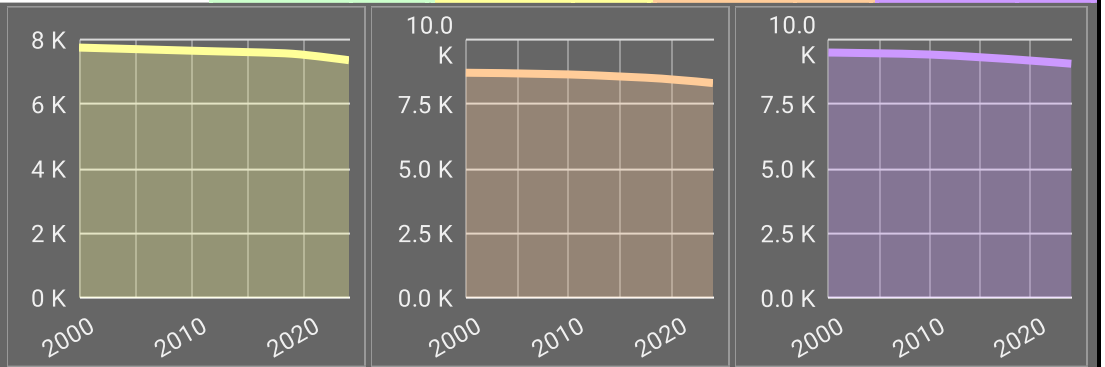
5 mi radius

10 mi radius

15 mi radius

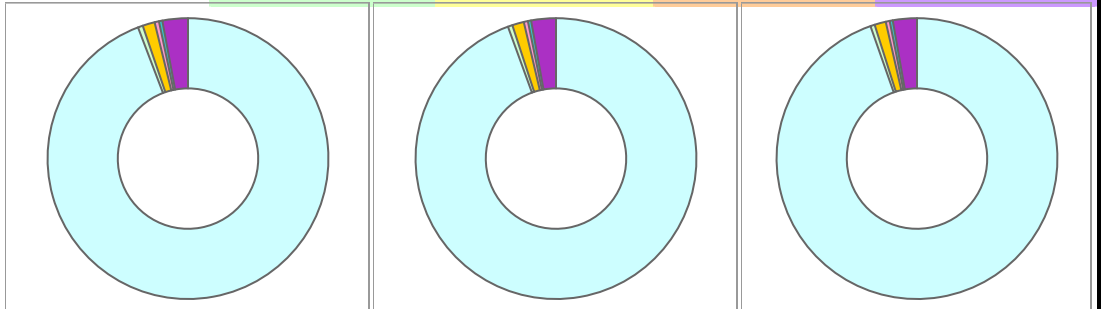
Population

Estimated Population (2019)	7,560	8,488	9,205
Projected Population (2024)	7,360	8,315	9,055
Census Population (2010)	7,656	8,650	9,411
Census Population (2000)	7,753	8,715	9,488
Projected Annual Growth (2019-2024)	-200 -0.5%	-173 -0.4%	-150 -0.3%
Historical Annual Growth (2010-2019)	-96 -0.1%	-162 -0.2%	-206 -0.2%
Historical Annual Growth (2000-2010)	-97 -0.1%	-66 -	-77 -
Estimated Population Density (2019)	96 psm	27 psm	13 psm
Trade Area Size	78.5 sq mi	314.0 sq mi	706.8 sq mi



Race and Ethnicity (2019)

Not Hispanic or Latino Population	7,299 96.5%	8,206 96.7%	8,909 96.8%
White	6,949 95.2%	7,830 95.4%	8,514 95.6%
Black or African American	27 0.4%	29 0.4%	30 0.3%
American Indian or Alaska Native	97 1.3%	105 1.3%	111 1.2%
Asian	38 0.5%	40 0.5%	42 0.5%
Hawaiian or Pacific Islander	- -	- -	- -
Other Race	- -	- -	- -
Two or More Races	188 2.6%	202 2.5%	212 2.4%
Hispanic or Latino Population	261 3.5%	282 3.3%	296 3.2%
White	173 66.3%	186 66.1%	196 66.2%
Black or African American	16 6.1%	16 5.7%	16 5.4%
American Indian or Alaska Native	9 3.4%	9 3.2%	9 3.0%
Asian	- -	- -	- -
Hispanic Hawaiian or Pacific Islander	- -	- -	- -
Other Race	29 11.3%	32 11.2%	33 11.1%
Two or More Races	34 12.9%	39 13.9%	42 14.3%



White Black or African American American Indian or Alaska Native Asian Hawaiian or Pacific Islander Other Race 2+ Races

This report was produced using data from private and government sources deemed to be reliable. The information herein is provided without representation or warranty.

GRAPHIC PROFILE

2000-2010 Census, 2019 Estimates with 2024 Projections

Calculated using Weighted Block Centroid from Block Groups

Lat/Lon: 47.0572/-109.4475

RGRAP3

Frontage Road

Lewistown, MT 59457

5 mi radius

10 mi radius

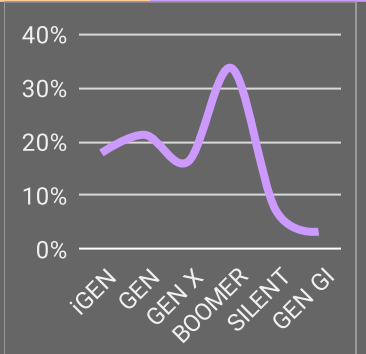
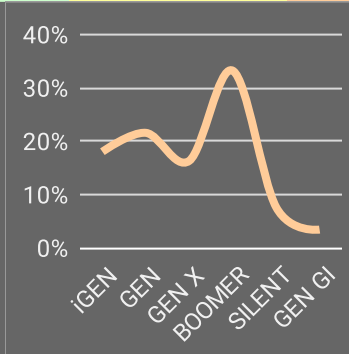
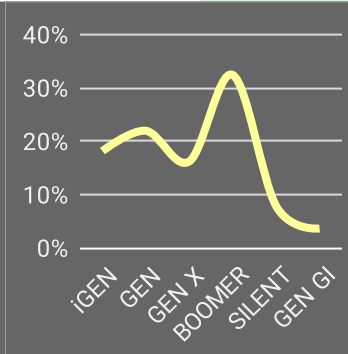
15 mi radius

Age Distribution (2019)

Age Group	5 mi radius	10 mi radius	15 mi radius
Age Under 5 Years	474 6.3%	528 6.2%	569 6.2%
Age 5 to 9 Years	467 6.2%	512 6.0%	547 5.9%
Age 10 to 14 Years	429 5.7%	488 5.7%	534 5.8%
Age 15 to 19 Years	387 5.1%	435 5.1%	474 5.1%
Age 20 to 24 Years	405 5.4%	444 5.2%	474 5.1%
Age 25 to 29 Years	434 5.7%	476 5.6%	509 5.5%
Age 30 to 34 Years	431 5.7%	472 5.6%	504 5.5%
Age 35 to 39 Years	454 6.0%	509 6.0%	548 6.0%
Age 40 to 44 Years	382 5.1%	433 5.1%	473 5.1%
Age 45 to 49 Years	386 5.1%	441 5.2%	483 5.2%
Age 50 to 54 Years	386 5.1%	451 5.3%	502 5.4%
Age 55 to 59 Years	513 6.8%	593 7.0%	658 7.1%
Age 60 to 64 Years	575 7.6%	661 7.8%	725 7.9%
Age 65 to 69 Years	537 7.1%	612 7.2%	671 7.3%
Age 70 to 74 Years	437 5.8%	499 5.9%	546 5.9%
Age 75 to 79 Years	332 4.4%	369 4.4%	399 4.3%
Age 80 to 84 Years	258 3.4%	275 3.2%	290 3.1%
Age 85 Years or Over	273 3.6%	289 3.4%	302 3.3%
Median Age	42.8	43.3	43.6

Generation (2019)

Generation	5 mi radius	10 mi radius	15 mi radius
iGeneration (Age Under 15 Years)	1,370 18.1%	1,527 18.0%	1,650 17.9%
Generation 9/11 Millennials (Age 15 to 34 Years)	1,657 21.9%	1,828 21.5%	1,960 21.3%
Gen Xers (Age 35 to 49 Years)	1,223 16.2%	1,382 16.3%	1,504 16.3%
Baby Boomers (Age 50 to 74 Years)	2,448 32.4%	2,817 33.2%	3,101 33.7%
Silent Generation (Age 75 to 84 Years)	590 7.8%	645 7.6%	688 7.5%
G.I. Generation (Age 85 Years or Over)	273 3.6%	289 3.4%	302 3.3%



This report was produced using data from private and government sources deemed to be reliable. The information herein is provided without representation or warranty.

GRAPHIC PROFILE

2000-2010 Census, 2019 Estimates with 2024 Projections

Calculated using Weighted Block Centroid from Block Groups

Lat/Lon: 47.0572/-109.4475

RGRAP3

Frontage Road

Lewistown, MT 59457

5 mi radius

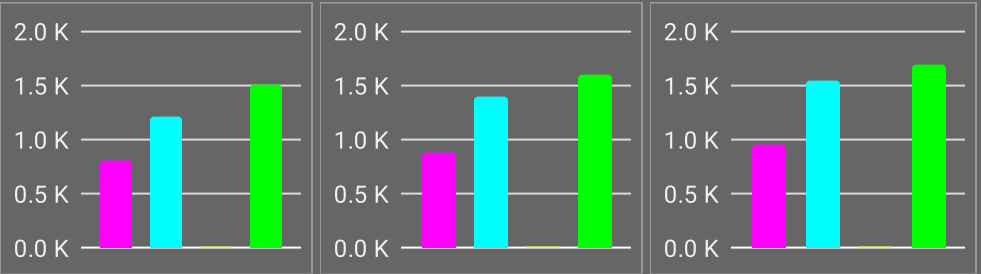
10 mi radius

15 mi radius

Household Type (2019)

	5 mi radius	10 mi radius	15 mi radius
Total Households	3,531	3,914	4,211
Family Households	2,010 56.9%	2,289 58.5%	2,503 59.4%
Family Households with Children	797 39.7%	886 38.7%	953 38.1%
Family Households No Children	1,212 60.3%	1,404 61.3%	1,550 61.9%
Non-Family Households	1,521 43.1%	1,624 41.5%	1,708 40.6%
Non-Family Households with Children	14 0.9%	16 1.0%	17 1.0%
Non-Family Households No Children	1,506 99.1%	1,609 99.0%	1,691 99.0%

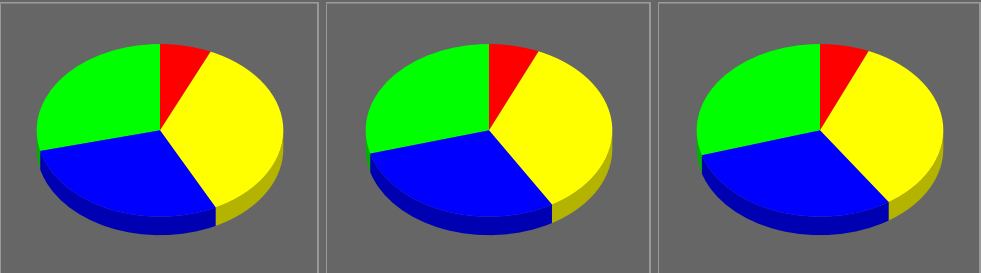
- Family Households with Children
- Family Households No Children
- Non-Family Households with Children
- Non-Family Households No Children



Education Attainment (2019)

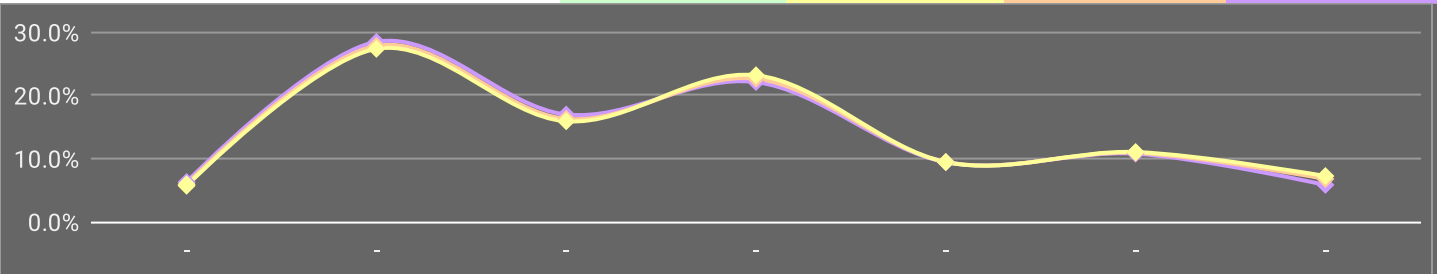
	5 mi radius	10 mi radius	15 mi radius
Elementary or Some High School	364 6.7%	401 6.6%	427 6.5%
High School Graduate	1,934 35.8%	2,121 34.9%	2,256 34.1%
Some College or Associate Degree	1,544 28.6%	1,775 29.2%	1,965 29.7%
Bachelor or Graduate Degree	1,557 28.8%	1,784 29.3%	1,960 29.7%

- Elementary or Some High School
- High School Graduate
- Some College or Associate Degree
- Bachelor or Graduate Degree



Household Income (2019)

	5 mi radius	10 mi radius	15 mi radius
Estimated Average Household Income	\$63,691	\$65,657	\$66,675
Estimated Median Household Income	\$47,693	\$49,256	\$50,198
HH Income Under \$10,000	223 6.3%	233 6.0%	241 5.7%
HH Income \$10,000 to \$34,999	1,006 28.5%	1,090 27.9%	1,153 27.4%
HH Income \$35,000 to \$49,999	600 17.0%	638 16.3%	671 15.9%
HH Income \$50,000 to \$74,999	781 22.1%	887 22.7%	977 23.2%
HH Income \$75,000 to \$99,999	333 9.4%	371 9.5%	399 9.5%
HH Income \$100,000 to \$149,999	381 10.8%	428 10.9%	466 11.1%
HH Income \$150,000 or More	207 5.9%	266 6.8%	305 7.3%



This report was produced using data from private and government sources deemed to be reliable. The information herein is provided without representation or warranty.

EXPANDED PROFILE

2000-2010 Census, 2019 Estimates with 2024 Projections

Calculated using Weighted Block Centroid from Block Groups

Lat/Lon: 47.0572/-109.4475

RF5

Frontage Road

Lewistown, MT 59457

Population

	5 mi radius		10 mi radius		15 mi radius	
Estimated Population (2019)	7,560		8,488		9,205	
Projected Population (2024)	7,360		8,315		9,055	
Census Population (2010)	7,656		8,650		9,411	
Census Population (2000)	7,753		8,715		9,488	
Projected Annual Growth (2019 to 2024)	-200	-0.5%	-173	-0.4%	-150	-0.3%
Historical Annual Growth (2010 to 2019)	-96	-0.1%	-162	-0.2%	-206	-0.2%
Historical Annual Growth (2000 to 2010)	-97	-0.1%	-66	-	-77	-
Estimated Population Density (2019)	96 psm		27 psm		13 psm	
Trade Area Size	78.5 sq mi		314.0 sq mi		706.8 sq mi	

Households

Estimated Households (2019)	3,531		3,914		4,211	
Projected Households (2024)	3,442		3,838		4,146	
Census Households (2010)	3,478		3,880		4,189	
Census Households (2000)	3,302		3,668		3,960	
Estimated Households with Children (2019)	812	23.0%	901	23.0%	970	23.0%
Estimated Average Household Size (2019)	2.07		2.09		2.10	

Average Household Income

Estimated Average Household Income (2019)	\$63,691		\$65,657		\$66,675	
Projected Average Household Income (2024)	\$81,688		\$82,969		\$83,460	
Estimated Average Family Income (2019)	\$80,328		\$82,773		\$83,890	

Median Household Income

Estimated Median Household Income (2019)	\$47,693		\$49,256		\$50,198	
Projected Median Household Income (2024)	\$55,454		\$57,280		\$58,390	
Estimated Median Family Income (2019)	\$59,193		\$60,443		\$61,099	

Per Capita Income

Estimated Per Capita Income (2019)	\$30,082		\$30,686		\$30,961	
Projected Per Capita Income (2024)	\$38,552		\$38,722		\$38,684	
Estimated Per Capita Income 5 Year Growth	\$8,470	28.2%	\$8,036	26.2%	\$7,724	24.9%
Estimated Average Household Net Worth (2019)	\$442,831		\$483,678		\$503,774	

Daytime Demos (2019)

Total Businesses	578		603		626	
Total Employees	4,279		4,431		4,581	
Company Headquarter Businesses	2	0.3%	2	0.3%	2	0.3%
Company Headquarter Employees	64	1.5%	64	1.4%	64	1.4%
Employee Population per Business	7.4		7.3		7.3	
Residential Population per Business	13.1		14.1		14.7	

This report was produced using data from private and government sources deemed to be reliable. The information herein is provided without representation or warranty.

EXPANDED PROFILE

2000-2010 Census, 2019 Estimates with 2024 Projections

Calculated using Weighted Block Centroid from Block Groups

Lat/Lon: 47.0572/-109.4475

RF5

Frontage Road

Lewistown, MT 59457

Race & Ethnicity

	5 mi radius		10 mi radius		15 mi radius	
White (2019)	7,122	94.2%	8,016	94.4%	8,710	94.6%
Black or African American (2019)	43	0.6%	45	0.5%	46	0.5%
American Indian or Alaska Native (2019)	106	1.4%	114	1.3%	120	1.3%
Asian (2019)	38	0.5%	40	0.5%	42	0.5%
Hawaiian or Pacific Islander (2019)	-	-	-	-	-	-
Other Race (2019)	29	0.4%	32	0.4%	33	0.4%
Two or More Races (2019)	222	2.9%	241	2.8%	255	2.8%
Not Hispanic or Latino Population (2019)	7,299	96.5%	8,206	96.7%	8,909	96.8%
Hispanic or Latino Population (2019)	261	3.5%	282	3.3%	296	3.2%
Not Hispanic or Latino Population (2024)	7,091	96.3%	8,023	96.5%	8,748	96.6%
Hispanic or Latino Population (2024)	269	3.7%	292	3.5%	308	3.4%
Not Hispanic or Latino Population (2010)	7,516	98.2%	8,498	98.2%	9,252	98.3%
Hispanic or Latino Population (2010)	140	1.8%	152	1.8%	159	1.7%
Not Hispanic or Latino Population (2000)	7,693	99.2%	8,648	99.2%	9,413	99.2%
Hispanic or Latino Population (2000)	59	0.8%	67	0.8%	75	0.8%
Projected Hispanic Annual Growth (2019 to 2024)	9	0.7%	11	0.8%	12	0.8%
Historic Hispanic Annual Growth (2000 to 2019)	202	17.8%	215	16.8%	221	15.6%

Age Distribution (2019)

Age Under 5	474	6.3%	528	6.2%	569	6.2%
Age 5 to 9 Years	467	6.2%	512	6.0%	547	5.9%
Age 10 to 14 Years	429	5.7%	488	5.7%	534	5.8%
Age 15 to 19 Years	387	5.1%	435	5.1%	474	5.1%
Age 20 to 24 Years	405	5.4%	444	5.2%	474	5.1%
Age 25 to 29 Years	434	5.7%	476	5.6%	509	5.5%
Age 30 to 34 Years	431	5.7%	472	5.6%	504	5.5%
Age 35 to 39 Years	454	6.0%	509	6.0%	548	6.0%
Age 40 to 44 Years	382	5.1%	433	5.1%	473	5.1%
Age 45 to 49 Years	386	5.1%	441	5.2%	483	5.2%
Age 50 to 54 Years	386	5.1%	451	5.3%	502	5.4%
Age 55 to 59 Years	513	6.8%	593	7.0%	658	7.1%
Age 60 to 64 Years	575	7.6%	661	7.8%	725	7.9%
Age 65 to 74 Years	974	12.9%	1,111	13.1%	1,217	13.2%
Age 75 to 84 Years	590	7.8%	645	7.6%	688	7.5%
Age 85 Years or Over	273	3.6%	289	3.4%	302	3.3%
Median Age	42.8		43.3		43.6	

Gender Age Distribution (2019)

Female Population	3,819	50.5%	4,247	50.0%	4,580	49.8%
Age 0 to 19 Years	832	21.8%	925	21.8%	999	21.8%
Age 20 to 64 Years	1,986	52.0%	2,220	52.3%	2,402	52.4%
Age 65 Years or Over	1,001	26.2%	1,101	25.9%	1,179	25.8%
Female Median Age	44.7		45.1		45.3	
Male Population	3,741	49.5%	4,241	50.0%	4,625	50.2%
Age 0 to 19 Years	924	24.7%	1,037	24.5%	1,124	24.3%
Age 20 to 64 Years	1,980	52.9%	2,260	53.3%	2,473	53.5%
Age 65 Years or Over	836	22.3%	944	22.3%	1,028	22.2%
Male Median Age	41.1		41.6		41.9	

This report was produced using data from private and government sources deemed to be reliable. The information herein is provided without representation or warranty.

EXPANDED PROFILE

2000-2010 Census, 2019 Estimates with 2024 Projections

Calculated using Weighted Block Centroid from Block Groups

Lat/Lon: 47.0572/-109.4475

RF5

Frontage Road

Lewistown, MT 59457

Household Income Distribution (2019)

	5 mi radius		10 mi radius		15 mi radius	
HH Income \$200,000 or More	62	1.7%	91	2.3%	109	2.6%
HH Income \$150,000 to \$199,999	145	4.1%	175	4.5%	197	4.7%
HH Income \$100,000 to \$149,999	381	10.8%	428	10.9%	466	11.1%
HH Income \$75,000 to \$99,999	333	9.4%	371	9.5%	399	9.5%
HH Income \$50,000 to \$74,999	781	22.1%	887	22.7%	977	23.2%
HH Income \$35,000 to \$49,999	600	17.0%	638	16.3%	671	15.9%
HH Income \$25,000 to \$34,999	432	12.2%	459	11.7%	483	11.5%
HH Income \$15,000 to \$24,999	392	11.1%	422	10.8%	444	10.5%
HH Income Under \$15,000	405	11.5%	442	11.3%	467	11.1%
HH Income \$35,000 or More	2,302	65.2%	2,590	66.2%	2,817	66.9%
HH Income \$75,000 or More	921	26.1%	1,065	27.2%	1,169	27.8%

Housing (2019)

	5 mi radius		10 mi radius		15 mi radius	
Total Housing Units	3,901		4,354		4,715	
Housing Units Occupied	3,531	90.5%	3,914	89.9%	4,211	89.3%
Housing Units Owner-Occupied	2,479	70.2%	2,794	71.4%	3,034	72.0%
Housing Units, Renter-Occupied	1,051	29.8%	1,119	28.6%	1,177	28.0%
Housing Units, Vacant	371	10.5%	440	11.2%	505	12.0%

Marital Status (2019)

	5 mi radius		10 mi radius		15 mi radius	
Never Married	1,514	24.5%	1,658	23.8%	1,764	23.4%
Currently Married	3,002	48.5%	3,494	50.2%	3,876	51.3%
Separated	253	4.1%	283	4.1%	310	4.1%
Widowed	402	6.5%	426	6.1%	447	5.9%
Divorced	1,019	16.5%	1,100	15.8%	1,158	15.3%

Household Type (2019)

	5 mi radius		10 mi radius		15 mi radius	
Population Family	5,573	73.7%	6,318	74.4%	6,888	74.8%
Population Non-Family	1,747	23.1%	1,869	22.0%	1,967	21.4%
Population Group Quarters	240	3.2%	301	3.5%	351	3.8%
Family Households	2,010	56.9%	2,289	58.5%	2,503	59.4%
Non-Family Households	1,521	43.1%	1,624	41.5%	1,708	40.6%
Married Couple with Children	540	18.0%	610	17.5%	664	17.1%
Average Family Household Size	2.8		2.8		2.8	

Household Size (2019)

	5 mi radius		10 mi radius		15 mi radius	
1 Person Households	1,338	37.9%	1,429	36.5%	1,502	35.7%
2 Person Households	1,312	37.2%	1,498	38.3%	1,639	38.9%
3 Person Households	390	11.0%	438	11.2%	475	11.3%
4 Person Households	298	8.4%	334	8.5%	362	8.6%
5 Person Households	133	3.8%	148	3.8%	160	3.8%
6 or More Person Households	60	1.7%	67	1.7%	72	1.7%

Household Vehicles (2019)

	5 mi radius		10 mi radius		15 mi radius	
Households with 0 Vehicles Available	255	7.2%	266	6.8%	274	6.5%
Households with 1 Vehicles Available	1,140	32.3%	1,196	30.6%	1,241	29.5%
Households with 2 or More Vehicles Available	2,136	60.5%	2,452	62.6%	2,696	64.0%
Total Vehicles Available	6,800		7,744		8,486	
Average Vehicles Per Household	1.9		2.0		2.0	

This report was produced using data from private and government sources deemed to be reliable. The information herein is provided without representation or warranty.

EXPANDED PROFILE

2000-2010 Census, 2019 Estimates with 2024 Projections

Calculated using Weighted Block Centroid from Block Groups

Lat/Lon: 47.0572/-109.4475

RF5

Frontage Road

Lewistown, MT 59457

Labor Force (2019)

	5 mi radius		10 mi radius		15 mi radius	
Estimated Labor Population Age 16 Years or Over	6,107		6,868		7,455	
Estimated Civilian Employed	3,699	60.6%	4,111	59.9%	4,432	59.5%
Estimated Civilian Unemployed	97	1.6%	125	1.8%	144	1.9%
Estimated in Armed Forces	-	-	-	-	-	-
Estimated Not in Labor Force	2,311	37.8%	2,632	38.3%	2,879	38.6%
Unemployment Rate	1.6%		1.8%		1.9%	

Occupation (2019)

	5 mi radius		10 mi radius		15 mi radius	
Occupation: Population Age 16 Years or Over	3,699		4,111		4,432	
Management, Business, Financial Operations	449	12.1%	556	13.5%	643	14.5%
Professional, Related	708	19.1%	780	19.0%	839	18.9%
Service	623	16.8%	681	16.6%	722	16.3%
Sales, Office	1,196	32.3%	1,275	31.0%	1,336	30.1%
Farming, Fishing, Forestry	42	1.1%	53	1.3%	62	1.4%
Construct, Extraction, Maintenance	359	9.7%	405	9.8%	437	9.9%
Production, Transport Material Moving	321	8.7%	361	8.8%	392	8.9%
White Collar Workers	2,353	63.6%	2,611	63.5%	2,818	63.6%
Blue Collar Workers	1,345	36.4%	1,500	36.5%	1,613	36.4%

Consumer Expenditure (2019)

	5 mi radius		10 mi radius		15 mi radius	
Total Household Expenditure	\$181.71 M		\$205.74 M		\$223.77 M	
Total Non-Retail Expenditure	\$95.87 M	52.8%	\$108.55 M	52.8%	\$118.05 M	52.8%
Total Retail Expenditure	\$85.84 M	47.2%	\$97.19 M	47.2%	\$105.71 M	47.2%
Apparel	\$6.22 M	3.4%	\$7.05 M	3.4%	\$7.68 M	3.4%
Contributions	\$5.74 M	3.2%	\$6.54 M	3.2%	\$7.13 M	3.2%
Education	\$4.83 M	2.7%	\$5.53 M	2.7%	\$6.04 M	2.7%
Entertainment	\$10.04 M	5.5%	\$11.4 M	5.5%	\$12.42 M	5.6%
Food and Beverages	\$26.96 M	14.8%	\$30.48 M	14.8%	\$33.13 M	14.8%
Furnishings and Equipment	\$6.26 M	3.4%	\$7.11 M	3.5%	\$7.74 M	3.5%
Gifts	\$4.25 M	2.3%	\$4.85 M	2.4%	\$5.29 M	2.4%
Health Care	\$16.02 M	8.8%	\$18.09 M	8.8%	\$19.66 M	8.8%
Household Operations	\$7.06 M	3.9%	\$8.01 M	3.9%	\$8.72 M	3.9%
Miscellaneous Expenses	\$3.45 M	1.9%	\$3.9 M	1.9%	\$4.24 M	1.9%
Personal Care	\$2.43 M	1.3%	\$2.76 M	1.3%	\$3 M	1.3%
Personal Insurance	\$1.21 M	0.7%	\$1.39 M	0.7%	\$1.51 M	0.7%
Reading	\$400.09 K	0.2%	\$453.28 K	0.2%	\$493.11 K	0.2%
Shelter	\$38.46 M	21.2%	\$43.5 M	21.1%	\$47.28 M	21.1%
Tobacco	\$1.23 M	0.7%	\$1.37 M	0.7%	\$1.48 M	0.7%
Transportation	\$33.07 M	18.2%	\$37.45 M	18.2%	\$40.75 M	18.2%
Utilities	\$14.07 M	7.7%	\$15.86 M	7.7%	\$17.2 M	7.7%

Educational Attainment (2019)

	5 mi radius		10 mi radius		15 mi radius	
Adult Population Age 25 Years or Over	5,399		6,081		6,608	
Elementary (Grade Level 0 to 8)	85	1.6%	109	1.8%	125	1.9%
Some High School (Grade Level 9 to 11)	278	5.2%	292	4.8%	302	4.6%
High School Graduate	1,934	35.8%	2,121	34.9%	2,256	34.1%
Some College	1,097	20.3%	1,286	21.1%	1,433	21.7%
Associate Degree Only	447	8.3%	490	8.0%	532	8.1%
Bachelor Degree Only	1,142	21.1%	1,313	21.6%	1,448	21.9%
Graduate Degree	415	7.7%	471	7.7%	512	7.7%

This report was produced using data from private and government sources deemed to be reliable. The information herein is provided without representation or warranty.

EXPANDED PROFILE

2000-2010 Census, 2019 Estimates with 2024 Projections

Calculated using Weighted Block Centroid from Block Groups

Lat/Lon: 47.0572/-109.4475

RF5

Frontage Road

Lewistown, MT 59457

Units In Structure (2019)

	5 mi radius		10 mi radius		15 mi radius	
1 Detached Unit	2,686	77.2%	2,984	76.9%	3,213	76.7%
1 Attached Unit	-	-	2	-	3	-
2 to 4 Units	110	3.2%	120	3.1%	128	3.1%
5 to 9 Units	151	4.3%	153	3.9%	156	3.7%
10 to 19 Units	26	0.8%	27	0.7%	27	0.7%
20 to 49 Units	159	4.6%	161	4.2%	163	3.9%
50 or More Units	43	1.2%	44	1.1%	44	1.1%
Mobile Home or Trailer	355	10.2%	423	10.9%	476	11.4%
Other Structure	-	-	-	-	-	-

Homes Built By Year (2019)

Homes Built 2010 or later	47	1.4%	64	1.6%	77	1.8%
Homes Built 2000 to 2009	220	6.3%	306	7.9%	364	8.7%
Homes Built 1990 to 1999	224	6.4%	260	6.7%	292	7.0%
Homes Built 1980 to 1989	331	9.5%	370	9.5%	397	9.5%
Homes Built 1970 to 1979	410	11.8%	472	12.2%	521	12.4%
Homes Built 1960 to 1969	291	8.4%	314	8.1%	329	7.8%
Homes Built 1950 to 1959	621	17.9%	649	16.7%	670	16.0%
Homes Built Before 1949	1,387	39.9%	1,480	38.2%	1,561	37.3%

Home Values (2019)

Home Values \$1,000,000 or More	7	0.3%	13	0.5%	17	0.5%
Home Values \$500,000 to \$999,999	70	2.8%	96	3.5%	123	4.0%
Home Values \$400,000 to \$499,999	77	3.2%	112	4.0%	138	4.6%
Home Values \$300,000 to \$399,999	109	4.4%	162	5.8%	196	6.5%
Home Values \$200,000 to \$299,999	535	21.8%	601	21.6%	647	21.3%
Home Values \$150,000 to \$199,999	310	12.7%	349	12.5%	376	12.4%
Home Values \$100,000 to \$149,999	505	20.6%	534	19.2%	559	18.4%
Home Values \$70,000 to \$99,999	419	17.1%	428	15.4%	436	14.4%
Home Values \$50,000 to \$69,999	126	5.1%	143	5.1%	158	5.2%
Home Values \$25,000 to \$49,999	136	5.6%	154	5.5%	166	5.5%
Home Values Under \$25,000	183	7.4%	201	7.2%	217	7.1%
Owner-Occupied Median Home Value	\$155,629		\$167,798		\$174,167	
Renter-Occupied Median Rent	\$578		\$573		\$569	

Transportation To Work (2019)

Drive to Work Alone	2,762	77.0%	3,066	76.0%	3,298	75.2%
Drive to Work in Carpool	284	7.9%	318	7.9%	345	7.9%
Travel to Work by Public Transportation	39	1.1%	41	1.0%	42	1.0%
Drive to Work on Motorcycle	13	0.4%	24	0.6%	31	0.7%
Walk or Bicycle to Work	295	8.2%	344	8.5%	383	8.7%
Other Means	55	1.5%	56	1.4%	58	1.3%
Work at Home	136	3.8%	188	4.7%	230	5.2%

Travel Time (2019)

Travel to Work in 14 Minutes or Less	2,798	78.0%	3,024	74.9%	3,188	72.7%
Travel to Work in 15 to 29 Minutes	527	14.7%	605	15.0%	673	15.3%
Travel to Work in 30 to 59 Minutes	211	5.9%	248	6.1%	281	6.4%
Travel to Work in 60 Minutes or More	24	0.7%	45	1.1%	60	1.4%
Average Minutes Travel to Work	9.7		9.9		10.0	

This report was produced using data from private and government sources deemed to be reliable. The information herein is provided without representation or warranty.